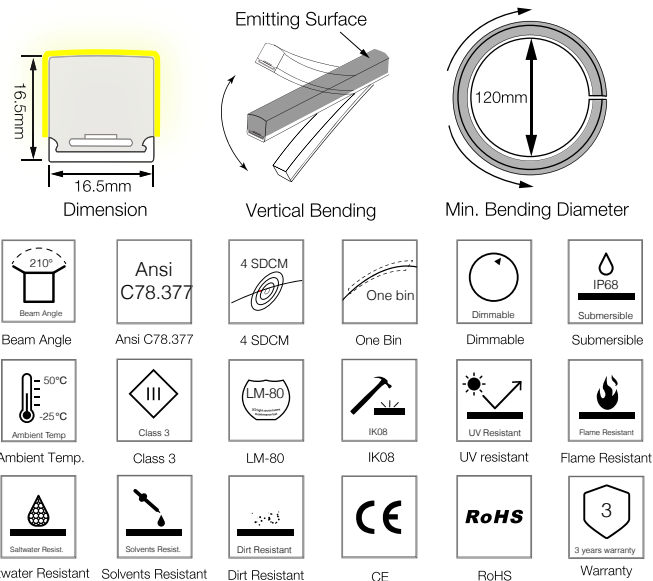
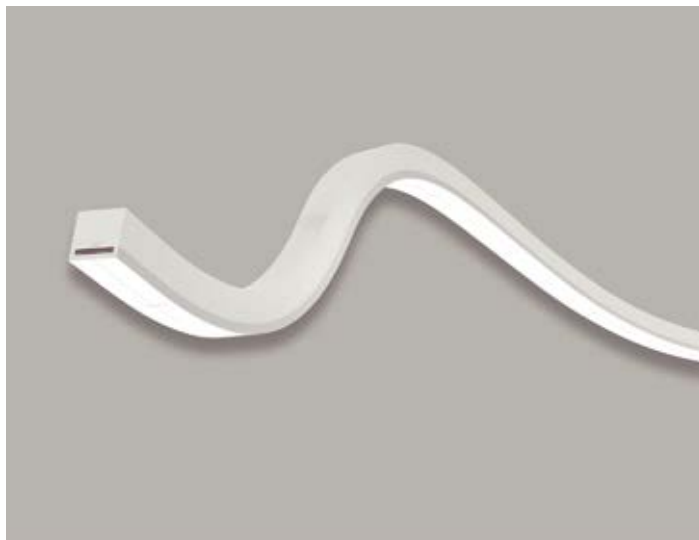


# F18 Mono Color LED Linear Flex

F18-24V-2835-120-CC-2200K-6500K

## Specification

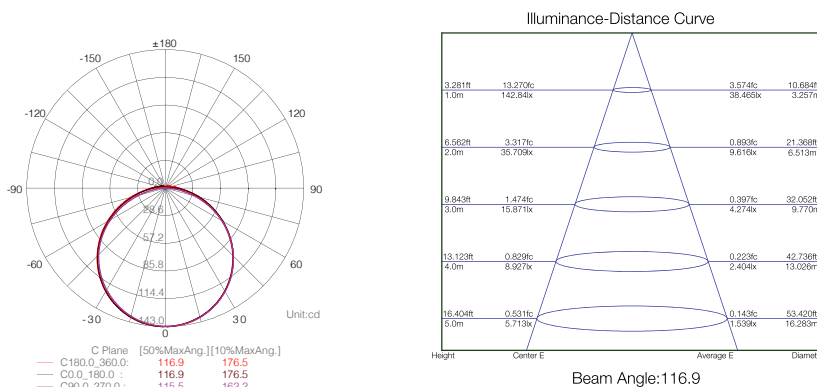


## Technical Parameters

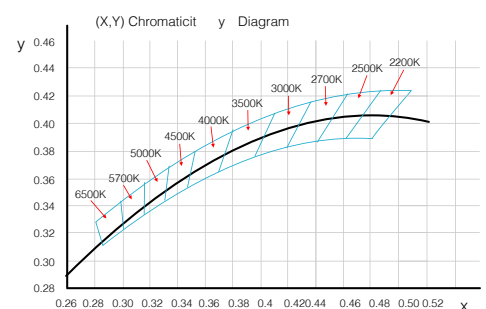
Electrical	
Input Voltage	24V DC (Built in Constant Current)
Power Consumption	10W/m
Physical	
LED Count	120 LEDs/m
Cutting Unit	6 LEDs
Cutting Unit Length	50 mm
Minimum Bend Diameter	120mm
Output	
LED Light	Epistar SMD LED 2835
CRI	>80, >90
Max Run Length*	
Single Feed	15M
Double Feed	30M
Beam Angle	210°
Lumen Maintenance	70,000 Hours L70 @ 25°C 50,000 Hours L70 @ 50°C
Temperature Ranges	
Installation	0°C to 50°C
Operating	-25°C to 50°C
Dependability	
Warranty	3 Years Warranty
IP Rating	IP68 Wet location submersible <2m

Optional Color	Lumen Output
	2200K(2238±102K) 360lm/m
	2700K(2725±145K) 360lm/m
	3000K(3045±175K) 400lm/m
	3500K(3465±245K) 400lm/m
	4000K(3985±275K) 430lm/m
	5000K(5029±283K) 430lm/m
	5700K(5669±355K) 410lm/m
	6500K(6532±510K) 410lm/m
	Green(520-530nm) 390lm/m
	Blue (520-530nm) 60lm/m
	Red (620-630nm) 120lm/m
	Pink(630-645nm) 360lm/m
	Amber (585-595nm) 90lm/m
	Orange(630-645nm) 80lm/m

## Illuminance Distribution



## White Color Charts



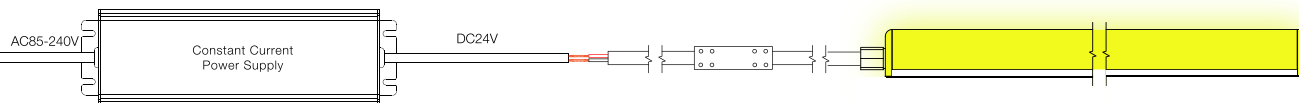
# F18 Mono Color LED Linear Flex

## Connection

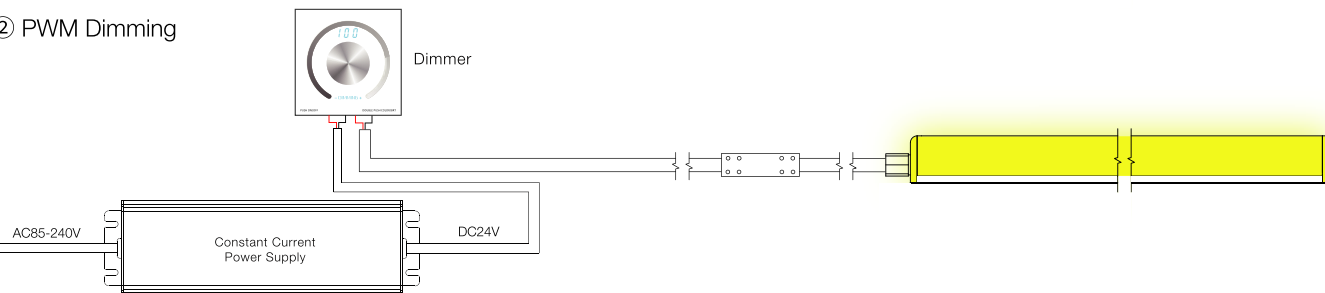
FG (Green)  
AC/L (Brown)  
AC/N (Blue)



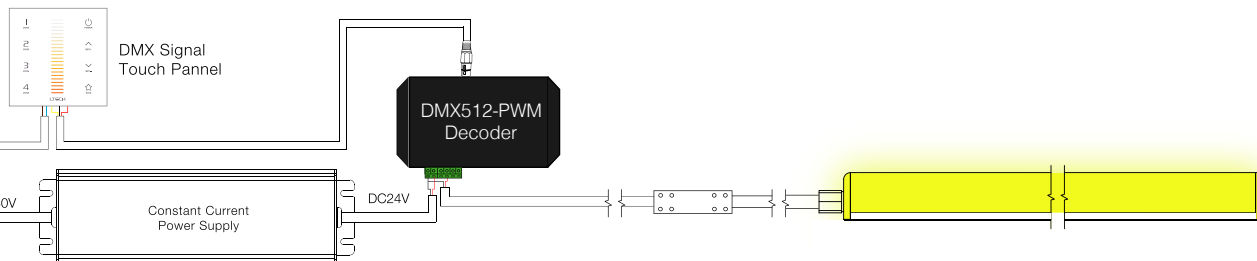
### ① Regular Connection



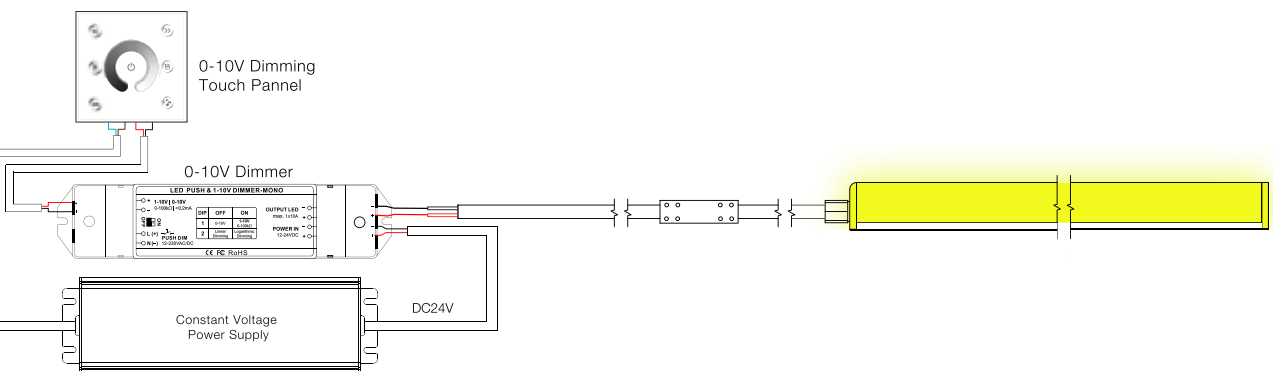
### ② PWM Dimming



### ③ DMX Dimming



### ④ 0-10V Dimming



### ⑤ Dali Dimming

