

# Ustorm —SERIES—



Front & Rear Maintenance



Customizable Shape



Good Heat Dissipation



Air Conditioning



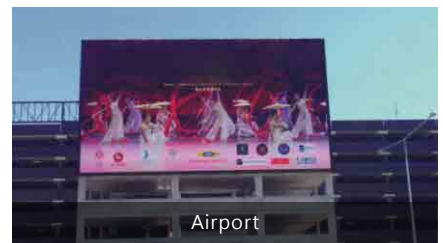
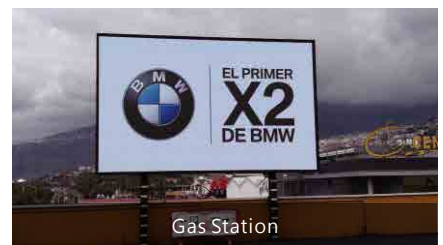
Energy saving



Wide Viewing Angle



## APPLICATIONS



## FEATURES

- Optional front and rear maintenance
- Customizable cabinet shape and size
- Excellent heat dissipation system, free of air conditioning
- Stays strong under -40°C extreme weather

## SPECIFICATIONS

Parameter	Value	
Model	Ustorm10	Ustorm16
Pixel Pitch	10mm	16.7mm
Pixel Density	10,000 dots/m <sup>2</sup>	3,600 dots/m <sup>2</sup>
Panel Resolution	120 x 120 dots	72 x 72 dots
Panel Size (W × H × D) (Front/Rear)	1,200mm x 1,200mm x 108.9mm	1,200mm x 1,200mm x 108.9mm
	1,200mm x 1,200mm x 123.7mm	1,200mm x 1,200mm x 123.7mm
Material	Sheet Metal Aluminum	Sheet Metal Aluminum
Brightness	8,000 cd/m <sup>2</sup>	8,000 cd/m <sup>2</sup>
Color Temperature	2,000 - 9300 K Adjustable	2,000 - 9300 K Adjustable
Viewing Angle (H/V)	120°/55°	120°/55°
Panel Weight (Front/Rear)	54kg/51.5kg	54kg/51.5kg
Contrast Ratio	4,000:1	5,000:1
Service Access	Front or Rear	Front or Rear
Input Power (Max.)	420 W/m <sup>2</sup>	400 W/m <sup>2</sup>
Input Power (Ave.)	140 W/m <sup>2</sup>	134 W/m <sup>2</sup>
Ingress Protection	Front IP65, Rear IP54	Front IP65, Rear IP54
Input Voltage	100 - 240 VAC	100 - 240 VAC
Refresh Rate	3,840 Hz	3,840 Hz
Operating Temperature/Humidity	-20°C to 50°C/10% - 90% RH	-20°C to 50°C/10% - 90% RH
Storage Temperature/Humidity	-30°C to 60°C/10% - 80% RH	-30°C to 60°C/10% - 80% RH
Certification	CE, CB, FCC	CE, CB, FCC

## DIMENSIONS

